



# *City of Yelm*

## ***STAFF REPORT***

To: Mayor Ron Harding  
Yelm City Council

From: Grant Beck, Community Development Director

Date: June 27 (for July 8, 2008 City Council Meeting)

Subj: 2009 to 2014 Six Year Transportation Improvement Program

### **Recommendation**

Adopt Resolution Number 486 establishing the 2009 to 2014 Yelm Six Year Transportation Improvement Program.

### **Background**

The six year transportation improvement program (STIP) is the capital facilities document that guides transportation funding for a six year cycle. The STIP is based on the Yelm Comprehensive Transportation Plan and is the 'implementation' document for the overall plan. Projects that are not on the STIP are not eligible for State or Federal funding, or the use of local Traffic Facilities Charges (TFC's). Although it is a six year plan, it is required to be updated annually as projects are completed and new priorities arise.

In 2004, the City created a Yelm Transportation Committee to review the STIP, transportation funding applications, and other transportation related issues.

The Committee in 2004 adopted criteria for the establishment of priorities for transportation projects, updated construction estimates, and prioritized transportation projects against that criteria.

Since the formation of the Transportation Committee, the following projects from the STIP have been completed:

- 103<sup>rd</sup> Street - reconstruction
- Stevens Street East – new connection
- 2<sup>nd</sup> Street – reconstruction
- Stevens Street West – new connection providing an east/west north of Yelm Avenue

Additionally, the following projects are well funded and well underway, including one (the Prairie Line Trail) that was not added to the STIP until 2007:

- Yelm Avenue West/Killion Road
- Coates Road
- Yelm Prairie Line Trail

This year, because the Committee is preparing an updated Transportation Plan with a new project list, no changes to the STIP are recommended, with the exception of dropping the Stevens Street West and 2<sup>nd</sup> Street Improvement projects, both of which were completed and closed in 2007.

The draft STIP as recommended by the YTC is attached to this staff report.

<b><i>Project</i></b>	<b><i>2008-2013</i></b>	<b><i>2009-2014</i></b>
SR 510 Yelm Loop	1	1
Coates Avenue Connector (Y4)	3	2 <sup>a</sup>
Yelm Avenue West/Killion Road	13	3 <sup>b</sup>
Yelm Prarie Line Trail	19	4 <sup>c</sup>
Road Resurfacing	4	5
West Road Improvements	5	6
Mosman SE Street Connection	6	7
Yelm Avenue CBD	8	9
NP Road Improvements	9	10
Rhoton Road Improvements	10	11
Mosman Street/SR 507 Realignment	11	12
Solberg/Mosman Improvements	12	13
Mill Road Vertical Realignment	14	14
Mill Road/SR 507 Intersection	15	15
View Drive	16	16
Bald Hills Road	17	17
SR 507 Yelm Loop (Y-2)	18	18
Stevens Street West	2	Completed
2 <sup>nd</sup> Street Improvements	7	Completed

### **Current Situation**

The Yelm Transportation Committee has prepared an updated six year transportation improvement program for the Council's consideration and adoption.

<sup>a</sup> Contract to be advertised in early summer, 2008.

<sup>b</sup> Construction to be complete before fall, 2008.

<sup>c</sup> Contract to be advertised in early summer, 2008.

CITY OF YELM  
RESOLUTION NUMBER 486  
SIX YEAR TRANSPORTATION IMPROVEMENT PROGRAM

WHEREAS, Section RCW 35.77.010 RCW requires the adoption of a six year transportation improvement program; and

WHEREAS, the adopted six year transportation improvement program has been updated annually by the City Council; and

WHEREAS, the City Council has determined that recommendations of the Yelm Transportation Committee to update and amend the adopted six year transportation improvement program are consistent with the Comprehensive Plan and Transportation Plan;

NOW, THEREFORE, BE IT RESOLVED by the City Council of the City of Yelm that the 2009-2014 six year transportation improvement program attached to this resolution as Exhibit A is hereby adopted and that a copy of this resolution be filed with the Director of the Washington State Department of Transportation.

APPROVED this 8<sup>th</sup> day July, 2008.

---

Ron Harding, Mayor

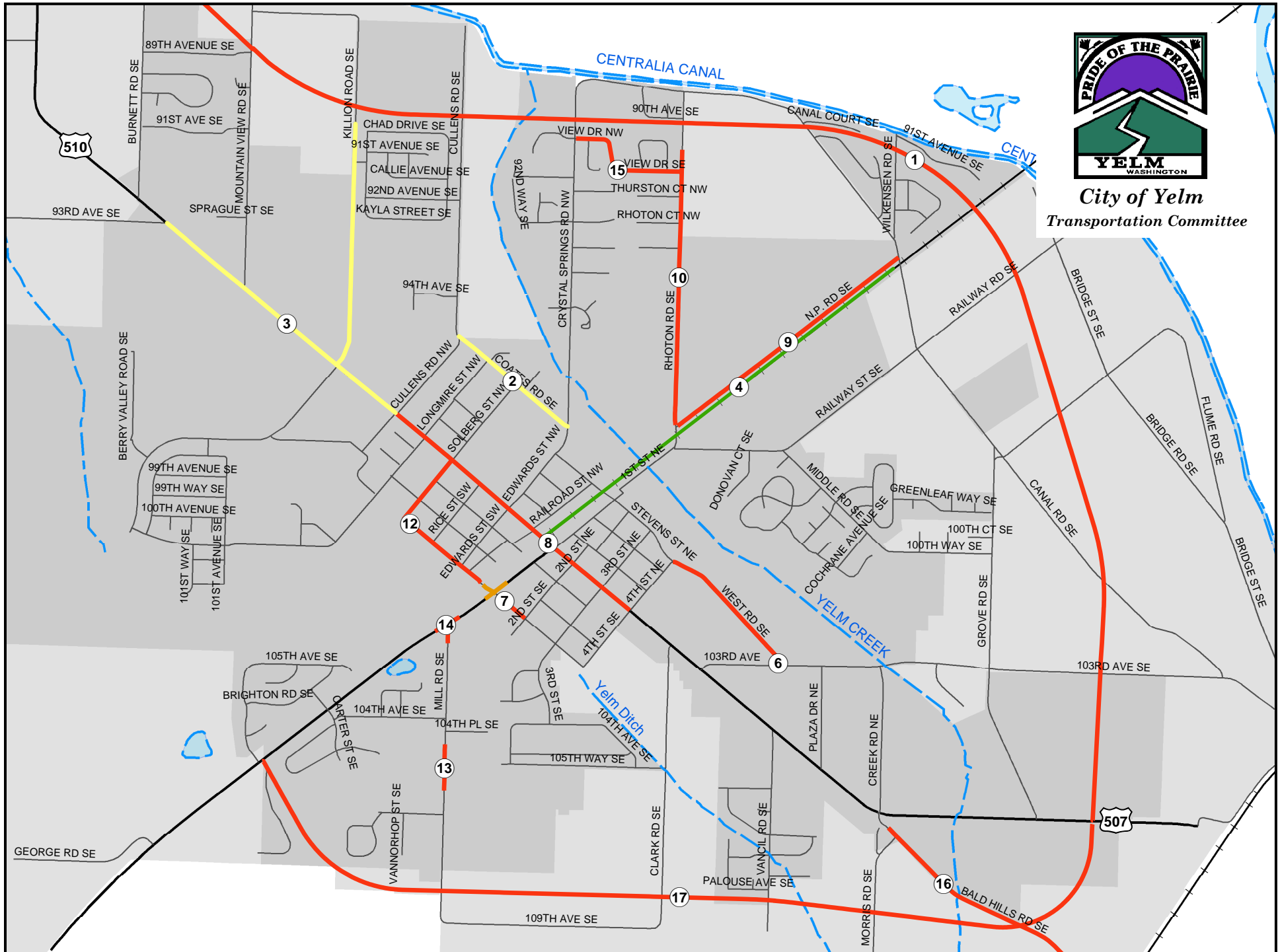
ATTEST:

---

Janine Schnepf, City Clerk



**City of Yelm**  
*Transportation Committee*



# 1 *SR 510 Loop*

## Description

Length of Improvement	23000	New State Route from Mud Run Road to Wal-Mart.
Classification	Arterial	
Commercial ROW (lf)	0	
Residential ROW (lf)	60	

## Estimated Cost

Construction	\$	56,000,000.00
Right of Way	\$	30,000,000.00
Engineering	\$	6,200,000.00
Utility/Contingency		
<b>Total</b>	<b>\$</b>	<b>92,200,000.00</b>

## Revenue

State	\$	90,200,000.00
Federal	\$	2,000,000.00
<b>Total</b>	<b>\$</b>	<b>92,200,000.00</b>

# 2 *Coates Avenue Connector (Y4)*

## Description

Length of Improvement	1700	Crystal Springs Road to Cullens Road. Improve to collector standards.
Classification	Collector	
Commercial ROW (lf)	0	
Residential ROW (lf)	0	

## Estimated Cost

Construction		
Right of Way		
Engineering		
Utility/Contingency		
<b>Total</b>	<b>\$</b>	<b>1,043,000.00</b>

## Revenue

TIB	\$	500,000.00
Regional	\$	-
Yelm Match	\$	-
Yelm	\$	543,000.00
<b>Total</b>	<b>\$</b>	<b>1,043,000.00</b>

### 3 *Yelm Avenue West/Killion Road*

**Description**

Length of Improvement	0
Classification	Collector
Commercial ROW (If)	0
Residential ROW (If)	0

Widen roadway from 93rd to Cullens, including center turn lane. Widen Killion Road to SR 510 Yelm Loop to arterial standards. Install traffic signal.

**Estimated Cost**

Construction	\$	-
Right of Way	\$	-
Engineering	\$	-
Utility/Contingency	\$	-
<b>Total</b>	<b>\$</b>	<b>8,800,000.00</b>

**Revenue**

LID	\$	8,800,000.00
<b>Total</b>	<b>\$</b>	<b>8,800,000.00</b>

### 4 *Yelm Prairie Line Trail*

**Estimated Cost**

Construction		
Right of Way		
Engineering		
Utility/Contingency		
<b>Total</b>	<b>\$</b>	<b>973,554.00</b>

**Revenue**

Regional	\$	973,554.00
Yelm Match		

Construct a new pedestrian/bike trail from Yelm Avenue to Canal Road along the City's Prairie Line railroad and a parking lot/trailhead facility near 1st and Rhoton.

### 5 *Road Re-surfacing*

## 6 *West Road Street Improvements*

### Description

Length of Improvement	1800
Classification	Collector
Commercial ROW (lf)	0
Residential ROW (lf)	0

4th Street to 103rd. Widen northern travel lane to include 12 foot drive lane and 4 foot bike lane with curb and gutter (no side walk or planter strip).

### Estimated Cost

Construction	\$	345,000.00
Right of Way	\$	-
Engineering	\$	86,250.00
Utility/Contingency	\$	86,250.00
<b>Total</b>	<b>\$</b>	<b>517,500.00</b>

### Revenue

TIB		
Regional		
Yelm Match	\$	-
Yelm	\$	405,000.00
<b>Total</b>	<b>\$</b>	<b>405,000.00</b>

## 7 *Mosman SE Street Connection*

### Description

Length of Improvement	500
Classification	Collector
Commercial ROW (lf)	0
Residential ROW (lf)	0

SR 507 (1st Street) to 2nd Street. Widen roadway to neighborhood collector standards at Yelm City Park.

### Estimated Cost

Construction	\$	287,500.00
Right of Way	\$	-
Engineering	\$	71,875.00
Utility/Contingency	\$	71,875.00
<b>Total</b>	<b>\$</b>	<b>431,250.00</b>

### Revenue

TIB	\$	329,100.00
Regional	\$	90,000.00
Yelm Match	\$	12,150.00
Yelm	\$	-
<b>Total</b>	<b>\$</b>	<b>431,250.00</b>

Note: Modify Collector design to utilize existing ROW (50') on Mosman. Eliminate sidewalk on north side of Mosman.

## 8 *Yelm Avenue CBD*

### Description

Length of Improvement	3500	Longmire to Fourth Street. Widen roadway to urban arterial standards and a light at Longmire.
Classification	Arterial	
Commercial ROW (lf)	0	
Residential ROW (lf)	0	

### Estimated Cost

Construction	\$	1,207,500.00
Right of Way	\$	-
Engineering	\$	301,875.00
Utility/Contingency	\$	301,875.00
<b>Total</b>	<b>\$</b>	<b>1,811,250.00</b>

### Revenue

TIB	\$	1,358,437.50
Regional		
Yelm Match	\$	452,812.50
Yelm		
<b>Total</b>	<b>\$</b>	<b>1,811,250.00</b>

Note: Will tie in many spot improvements, including curb and gutter and sidewalks in some locations.

## 9 *NP Road Improvements*

### Description

Length of Improvement	3500	Rhoton Road to Canal Road. Widen roadway, railroad crossing, new intersection alignment and lighting.
Classification	Collector	
Commercial ROW (lf)	0	
Residential ROW (lf)	0	

### Estimated Cost

Construction	\$	2,012,500.00
Right of Way	\$	-
Engineering	\$	503,125.00
Utility/Contingency	\$	503,125.00
<b>Total</b>	<b>\$</b>	<b>3,018,750.00</b>

### Revenue

TIB	\$	500,000.00
Regional	\$	90,000.00
Yelm Match	\$	12,150.00
Yelm	\$	2,416,600.00
<b>Total</b>	<b>\$</b>	<b>3,018,750.00</b>

## 10 *Rhoton Road Improvements*

### Description

Length of Improvement	4500
Classification	Collector
Commercial ROW (lf)	16
Residential ROW (lf)	0

Intersection of First Street and Railway Street to Canal Road. Widen roadway, drainage, lighting, resurfacing.

### Estimated Cost

Construction	\$	2,587,500.00
Right of Way	\$	1,242,000.00
Engineering	\$	646,875.00
Utility/Contingency	\$	646,875.00
<b>Total</b>	<b>\$</b>	<b>5,123,250.00</b>

### Revenue

TIB	\$	500,000.00
Regional	\$	90,000.00
Yelm Match	\$	12,150.00
Yelm	\$	4,521,100.00
<b>Total</b>	<b>\$</b>	<b>5,123,250.00</b>

## 11 *Mosman Street/SR507 Realignment*

### Description

Length of Improvement	600
Classification	Collector
Commercial ROW (lf)	0
Residential ROW (lf)	0

SR 507 to Railroad Street. Realign roadway to neighborhood collector standards.

### Estimated Cost

Construction	\$	345,000.00
Right of Way	\$	-
Engineering	\$	86,250.00
Utility/Contingency	\$	86,250.00
<b>Total</b>	<b>\$</b>	<b>517,500.00</b>

### Revenue

TIB	\$	415,350.00
Regional	\$	90,000.00
Yelm Match	\$	12,150.00
Yelm	\$	-
<b>Total</b>	<b>\$</b>	<b>517,500.00</b>

Note: Modify Collector design to utilize existing ROW (50').

## 12 *Solberg/Mosman Improvements*

### Description

Length of Improvement	2000	SR 510 (Yelm Avenue West) to Railway Street. Widen roadway to neighborhood collector standards.
Classification	Collector	
Commercial ROW (lf)	0	
Residential ROW (lf)	0	

### Estimated Cost

Construction	\$	1,150,000.00
Right of Way	\$	-
Engineering	\$	287,500.00
Utility/Contingency	\$	287,500.00
<b>Total</b>	<b>\$</b>	<b>1,725,000.00</b>

### Revenue

TIB	\$	500,000.00
Regional	\$	90,000.00
Yelm Match	\$	12,150.00
Yelm	\$	1,122,850.00
<b>Total</b>	<b>\$</b>	<b>1,725,000.00</b>

## 13 *Mill Road Vertical Alignment*

### Description

Length of Improvement	0	Between 104th and 107th Streets.
Classification	Collector	
Commercial ROW (lf)	0	
Residential ROW (lf)	0	

### Estimated Cost

Construction	\$	400,000.00
Right of Way	\$	-
Engineering	\$	102,150.00
Utility/Contingency	\$	100,000.00
<b>Total</b>	<b>\$</b>	<b>602,150.00</b>

### Revenue

TIB	\$	500,000.00
Regional	\$	90,000.00
Yelm Match		-
Yelm		
<b>Total</b>	<b>\$</b>	<b>590,000.00</b>

## 14 Mill Road/SR 507 Intersection

### Description

Length of Improvement	0
Classification	Collector
Commercial ROW (lf)	0
Residential ROW (lf)	0

Realign Mill Road with SR 507 and reconstruct Mill Road to collector standards.

### Estimated Cost

Construction	\$	400,000.00
Right of Way	\$	-
Engineering	\$	102,150.00
Utility/Contingency	\$	100,000.00
<b>Total</b>	<b>\$</b>	<b>602,150.00</b>

### Revenue

TIB	\$	500,000.00
Regional	\$	90,000.00
Yelm Match	\$	12,150.00
Yelm	\$	
<b>Total</b>	<b>\$</b>	<b>602,150.00</b>

## 15 View Drive

### Description

Length of Improvement	1600
Classification	Collector
Commercial ROW (lf)	0
Residential ROW (lf)	0

Reconstruct View Drive to modified collector standards.

### Estimated Cost

Construction	\$	920,000.00
Right of Way	\$	-
Engineering	\$	230,000.00
Utility/Contingency	\$	230,000.00
<b>Total</b>	<b>\$</b>	<b>1,380,000.00</b>

### Revenue

TIB	\$	500,000.00
Regional	\$	90,000.00
Yelm Match	\$	12,150.00
Yelm	\$	777,850.00
<b>Total</b>	<b>\$</b>	<b>1,380,000.00</b>

## 16 *Bald Hill Road*

### Description

Length of Improvement	1700
Classification	Arterial
Commercial ROW (lf)	10
Residential ROW (lf)	0

### Estimated Cost

Construction	\$	1,173,000.00
Right of Way	\$	293,250.00
Engineering	\$	293,250.00
Utility/Contingency	\$	293,250.00
<b>Total</b>	<b>\$</b>	<b>2,052,750.00</b>

### Revenue

TIB	\$	500,000.00
Regional	\$	90,000.00
Yelm Match	\$	12,150.00
Yelm	\$	1,450,600.00
<b>Total</b>	<b>\$</b>	<b>2,052,750.00</b>

## 17 *SR 507 Loop (Y-2)*

### Description

Length of Improvement	12000
Classification	Arterial
Commercial ROW (lf)	0
Residential ROW (lf)	60

### Estimated Cost

Construction	\$	40,000,000.00
Right of Way	\$	35,000,000.00
Engineering	\$	10,000,000.00
Utility/Contingency	\$	10,000,000.00
<b>Total</b>	<b>\$</b>	<b>95,000,000.00</b>

### Revenue

State
Federal