

# City of Yelm

## *Community Development Department*

*PO BOX 479*

*YELM, WA 98597*

*360-458-3835*

### **NOTICE OF APPLICATION**

Mailed on: March 29, 2005

**PROJECT NAME AND LOCATION:** Wal-Mart Supercenter  
SR 507, east of Grove Road

**LAND USE CASE:** SPR-05-0091-YL

An application submitted by PACLAND, 606 Columbia Street NW, Suite 106, Olympia, WA 98501, on behalf of Wal-Mart, for the above referenced project was received by the City of Yelm on March 9, 2005. The City determined the application to be complete on March 28, 2005. The application and any related documents are available for public review during normal business hours at the City of Yelm, 105 Yelm Avenue W., Yelm WA, or the City of Yelm's website at [ww.ci.yelm.wa.us](http://ww.ci.yelm.wa.us). For additional information, please contact the Community Development Department at 360-458-3835.

**PROJECT DESCRIPTION:** 187,400 square foot retail center on SR 507, east of Grove Road.

**ENVIRONMENTAL and OTHER DOCUMENTS SUBMITTED WITH THE APPLICATION:** An Environmental Checklist, Environmental Site Assessment, Geotechnical Engineering Evaluation, Preliminary Drainage and Erosion Report, Site Plan, Traffic Impact Analysis, Site Reconnaissance Report, and Water Supply Report were submitted with the application. These documents can be viewed on the City of Yelm's website at [www.ci.yelm.wa.us](http://www.ci.yelm.wa.us).

**Additional Information or Project Studies Requested by the City:** None at this time.

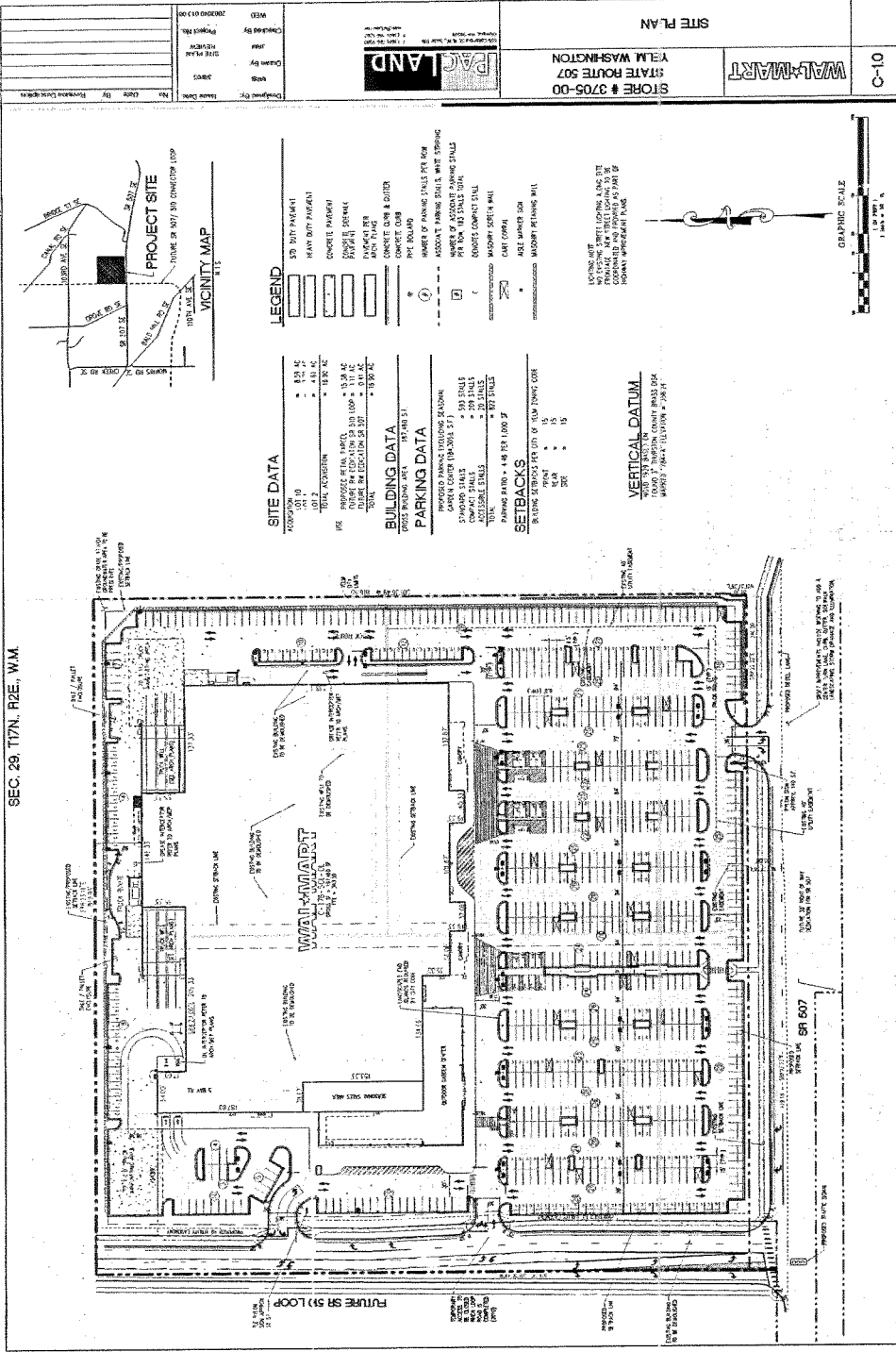
**No preliminary determination of consistency with City development regulations has been made. At minimum, this project will be subject to the following plans and regulations:** City of Yelm Comprehensive Plan, Zoning Title 17 YMC, Critical Areas Ordinance Chapter 14.08 YMC, Storm Water Drainage Design and Erosion Control Manual (DOE), International Building Code, and the State Environmental Policy Act (SEPA).

The City of Yelm invites your comments early in the review of this proposal. Comments should be directed to Grant Beck, Community Development Department, P.O. Box 479, Yelm WA 98597, 360-458-3835.

**THE INITIAL 15-DAY PUBLIC COMMENT PERIOD ENDS AT 5:00 PM ON APRIL 13, 2005.**

This notice has been provided to appropriate local and state agencies, and property owners within 300 feet of the project site. These recipients, and any others who submit a written request to be placed on the electronic mailing list, will also receive the following items when available or if applicable: Environmental Threshold Determination, and Notice of Final Decision. Additionally, there will be a public comment period when the environmental threshold determination is issued.

SEC. 28, T17N, R2E, W.M.



**SITE DATA**

ACROSSWAY	412.5'
LOT 10	412.5'
LOT 7	412.5'
TOTAL ACROSSWAY	1650.0'
PROPOSED RETAIL BUILDING	100.0' x 13.0' x 42.0'
EXISTING DRIVEWAY	100.0' x 13.0' x 42.0'
TOTAL	1650.0'

**BUILDING DATA**

RETAIL STORE

GROSS BUILDING AREA: 13,410 SQ. FT.

**PARKING DATA**

PROPOSED PARKING INCLUDING EXISTING

ASPHALT DRIVEWAY: 100.0' x 13.0' x 42.0'

CONCRETE DRIVEWAY: 100.0' x 13.0' x 42.0'

TOTAL: 1650.0'

**SETBACKS**

FRONT: 10.0'

REAR: 15.0'

SIDE: 15.0'

**VERTICAL DATUM**

TOPOGRAPHIC DATUM: 1985 MEAN SEA LEVEL

MARKED: 10.0' ELEVATION MARK

**LEGEND**

- 30' SETBACK
- EXISTING DRIVEWAY
- CONCRETE DRIVEWAY
- ASPHALT DRIVEWAY
- CONCRETE DRIVE & CURB
- ASPHALT DRIVE
- CONCRETE DRIVE
- ASPHALT DRIVE
- CONCRETE DRIVE

**CONCRETE DRIVE & CURB**

ASPHALT DRIVE

CONCRETE DRIVE

ASPHALT DRIVE

CONCRETE DRIVE

**ASPHALT DRIVEWAY**

CONCRETE DRIVEWAY

30' SETBACK

**ASPHALT DRIVE**

CONCRETE DRIVE

ASPHALT DRIVE

CONCRETE DRIVE

**CONCRETE DRIVE**

ASPHALT DRIVE

CONCRETE DRIVE

ASPHALT DRIVE

CONCRETE DRIVE

**ASPHALT DRIVE**

CONCRETE DRIVE

ASPHALT DRIVE

CONCRETE DRIVE

**CONCRETE DRIVE**

ASPHALT DRIVE

CONCRETE DRIVE

ASPHALT DRIVE

CONCRETE DRIVE

**ASPHALT DRIVE**

CONCRETE DRIVE

ASPHALT DRIVE

CONCRETE DRIVE

**CONCRETE DRIVE**

ASPHALT DRIVE

CONCRETE DRIVE

ASPHALT DRIVE

CONCRETE DRIVE

**ASPHALT DRIVE**

CONCRETE DRIVE

ASPHALT DRIVE

CONCRETE DRIVE

**CONCRETE DRIVE**

ASPHALT DRIVE

CONCRETE DRIVE

ASPHALT DRIVE

CONCRETE DRIVE

**ASPHALT DRIVE**

CONCRETE DRIVE

ASPHALT DRIVE

CONCRETE DRIVE

**CONCRETE DRIVE**

ASPHALT DRIVE

CONCRETE DRIVE

ASPHALT DRIVE

CONCRETE DRIVE

**ASPHALT DRIVE**

CONCRETE DRIVE

ASPHALT DRIVE

CONCRETE DRIVE

**CONCRETE DRIVE**

ASPHALT DRIVE

CONCRETE DRIVE

ASPHALT DRIVE

CONCRETE DRIVE

**ASPHALT DRIVE**

CONCRETE DRIVE

ASPHALT DRIVE

CONCRETE DRIVE